

Model 011-TU2:

Compact miniature (snap-on) fiber collimator for POF fiber

Compact miniature fiber collimator for POF fiber (M011-TU2) consists of plastic body and optical lens assembly and can be attached directly to FC-, SC-, ST- type optical connector as shown in the photo. It collimates or focuses beams from different multi-mode fiber patch-cords, or couples collimated beams into connectorized MM optical fiber patch-cords. It works with optical fibers having NA < 0.5. Collimator contains an optical lens, adjustable along Z-axis only, providing collimation or focusing. Collimator is a compact device, having plastic body.

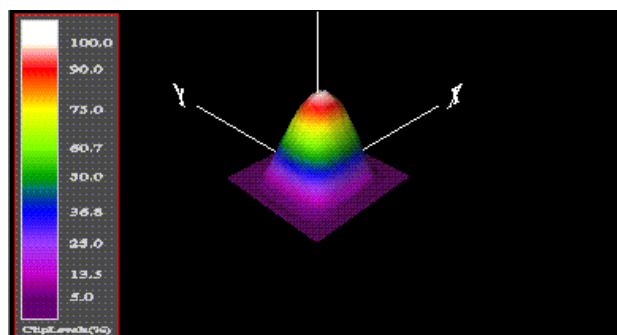
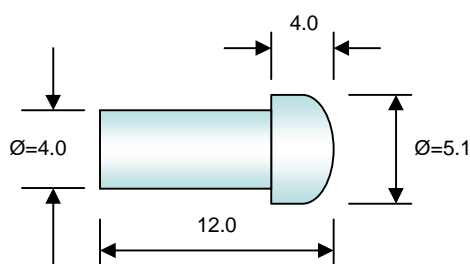


Key features:

- Compact *focusable broadband device*
- Non- magnetic body
- Can be used with different connectorized fibers (FC, - SC-, ST)

Operating wavelength (nm)	350-1000
Maximum optical power (mW)	500
Size (mm)	(5x12)
Collimated beam diameter* (mm)	~0.3- 4.5
Fiber type	Multi mode, fiber core diameter: 100-980 um, NA<0.5
Return loss (dB)	-30 ...-35

* Measured at distance of 25 mm from adjusted to collimation device

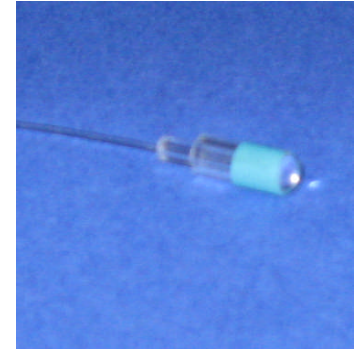


Typical field profile, measured at wavelength of ~530 nm for collimator attached to POF980/1000 MM FC/PC connectorized fiber patch-cord. TU-2 was adjusted to collimation

Model 015-TU2:

Pigtailed fiber collimator for POF fiber

Pigtailed fiber collimator for POF fiber (M011-TU2) consists of glass body and optical lens with POF pigtail having FC-, SMA-, ST- type optical connector on the other end. This assembly can be preset to collimates or focuses beams, or couples collimated beams into the pigtail. It can be supplied with POF pigtail having NA < 0.5 and core diameter of 0.5mm to 1.5mm.

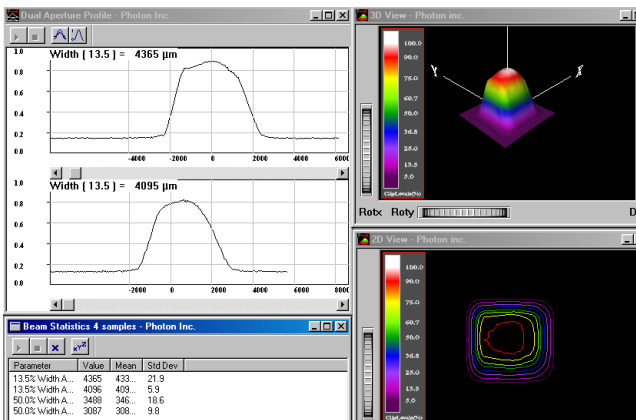


Key features:

- Non- magnetic corrosion resistance body
- Preset to collimation or focusing
- Can be supplied with different fiber pigtails

Operating wavelength (nm)	350-1000
Maximum optical power (mW)	1000
Size (mm)	~(6x20)
Beam diameter* (mm)	~1.5- 4.5
Fiber type	Plastic Optical fiber, core diameter : 500-1500 um NA<0.5
Connector type	FC, SMA, ST or flat polished end
Pigtail length (m)	0.1-1
Return loss (dB)	-30 ...-35

* Measured at distance of 5 mm from the collimator lens preset to collimation mode.



Typical beam profile measured at wavelength of ~637nm, distance of ~5mm from the collimator, device preset to collimation.

Model 016

Large aperture adjustable collimator for POF fiber

Model 016 is specially designed for application with large NA plastic optical fibers. It provides tight collimated or focused beam at working distance up to 2 meters. It can accept connectorized single or multiple optical fibers and operate with high optical power. It is supplied with optional mechanical fixture.



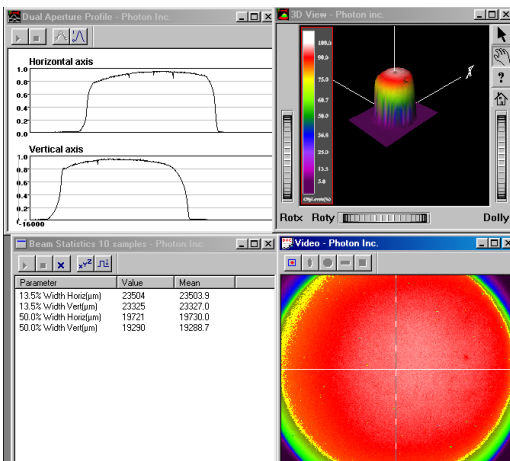
Key features:

- Works with high NA plastic fiber
- Operate with high optical power
- Adjustable focusing

Operating wavelength (nm)	350-1000
Maximum optical power (W)	3
Size (mm)	~(70x95x100) or ~(70x70x100)
Beam diameter* (mm)	~4.5*- 20**
Fiber type	Plastic Optical fiber, core diameter : 500-1500 um NA<0.5
Connector type	FC, SMA
Return loss (dB)	-30 ...-35

* Measured at distance of 25 cm

** Measured at distance of 100 cm.



Optical field profile, measured at distance of ~ 1 m from the objective aperture. Collimator is focused

Please contact WT&T sales@wttechnology.com for further details.

ALL INFORMATION IS PRELIMINARY AND SUBJECT TO CHANGE WITHOUT NOTICE. PRODUCT MAY VARY FROM PHOTOGRAPH