

Model 016

Large aperture adjustable collimator for POF fiber

Model 016 is specially designed for application with large NA plastic optical fibers. It provides tight collimated or focused beam at working distance up to 2 meters. It can accept connectorized single or multiple optical fibers and operate with high optical power. It is supplied with optional mechanical fixture.



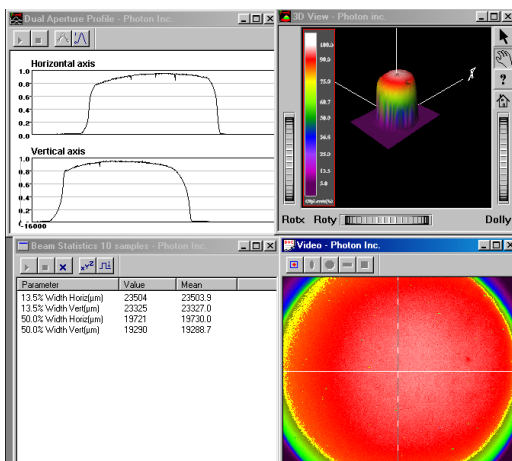
Key features:

- Works with high NA plastic fiber
- Operate with high optical power
- Adjustable focusing

Operating wavelength (nm)	350-1000
Maximum optical power (W)	3
Size (mm)	~(70x95x100) or ~(70x70x100)
Beam diameter* (mm)	~4.5*- 20**
Fiber type	Plastic Optical fiber, core diameter : 500-1500 um NA<0.5
Connector type	FC, SMA
Return loss (dB)	-30 ...-35

* Measured at distance of 25 cm

** Measured at distance of 100 cm.



Optical field profile, measured at distance of ~ 1 m from the objective aperture. Collimator is focused

Please contact WT&T sales@wttechnology.com for further details.

ALL INFORMATION IS PRELIMINARY AND SUBJECT TO CHANGE WITHOUT NOTICE. PRODUCT MAY VARY FROM PHOTOGRAPH